



Notice Inviting Quotation

NIQ No: 58/DM

Dated. 21/09/2021

Quotation are being invited from the bonafied civil contractor having experience in Govt. Civil Works for making Iron Gate at Dwanhat Mahavidyalaya , Dewanhhat Cooch Behar. The details specification are given here below:

Specification	Quantity(Sqft)	Estimated Price(Rs.)
Details Specification and Estimate attached and including photo for design	1	70,658/-

(Rupees seventy thousand six hundred fifty eight only)

Terms & Conditions:

- 1) Price should be inclusive of all taxes.
- 2) Work onsite at, Dwanhat Mahavidyalaya , Dewanhhat Cooch Behar .
- 3) Price should be at per or below.
- 4) Estimated time of completion 20 (Days) from the date of issue of work order.

Documents required to be submitted along with quotation:

- 1) Valid Trade License for FY:2021-22.
- 2) PAN Card and GST No.

Date and Time:

- a) The last date of submission of quotation 28/09/2021 at 3 P.M
- b) The estimated date of opening of quotation: 29/09/2021 at 4 P.M

Enclosed: Estimate and Drawing

Notice To be displayed at:

- 1) College Notice Board
- 2) Website of Dewanhat Mahavidyalaya
- 3) Notice Board of Panchayet Office
- 4)

*Signed 21.9.21*  
Principal  
Dewanhat Mahavidyalaya  
Principal  
Dewanhat Mahavidyalaya  
Dewanhat, Cooch Behar, Pin-736111

**ESTIMATE FOR PROPOSED CONSTRUCTION OF DEWANHAT COLLAGE GATE AT DEWANHAT, DIST COOCHBEHAR**

Sl. No.	Description	Quantity	Unit	Rate (Rs)	Amount (Rs)
1	M.S. gate of Jail type as per approved design made of strong M.S. frame work, intermediate stiffeners and round / square bars or angles. M.S. sheet (not less than 14 gauge) gussets, cleats etc. including necessary riveting, bolting, welding, locking and hanging arrangements, fitting and fixing complete as per direction of the Engineer-in-charge.  Face wall 1 X 2.10 X 2.400 = 5.04 m <sup>3</sup> 5.04 m <sup>3</sup>				
		5.04	qty	7693	Rs.38,772.72
2	Priming one coat on steel or other metal surface with synthetic oil bound primer of approved quality including smoothening surfaces by sand papering etc.  MS Plate 2 X 2.10 X 2.400 = 10.08 m <sup>3</sup> 10.08 m <sup>3</sup>				
		10.08	m <sup>3</sup>	29	Rs.292.32
3	Painting with best quality synthetic enamel paint of approved make and brand including smoothening surface by sand papering etc. including using of approved puffty etc. on the surface, if necessary : (a) On steel or other metal surface : (i) One coat (white in shade) Face wall 2 X 2.10 X 2.400 = 10.08 m <sup>2</sup> 10.08 m <sup>2</sup>				
		10.08	m <sup>2</sup>	49	Rs.493.92
4	M.S. structural works in columns, beams etc. with simple rolled structural members (e.g. joists, angle, channel sections conforming to IS: 226, IS: 808 & SP (6)1964 connected to one another with bracket, gussets, cleats as per design, direction of Engineer-in-charge complete including cutting to requisite shape and length, fabrication with necessary bolting, metal arc welding conforming to IS: 8161969 & IS: 1995 using electrodes of approved make and brand conforming to IS:8142004, haulage, hoisting and erection complete. The rate includes the cost of rolled steel section, consumables such as electrodes, gas and hire charge of all tools and plants and labour required for the work including all incidental charges such as electricity charges, labour insurance charges etc. (Payment to be made on the basis of calculated weight of structural members only in finished work as per IS specified weight. Payment for gusset, bracket, cleat, rivets, bolts and nuts may be made by adding the actual weight of such items with the weight of finished structural members or 7% of weight for finished structural members weighing not less than 22.5 Kg. / m. or 10 % of weight for finished structural members weighing less than 22.5 Kg. / m. may be increased allow for bracket, cleat, rivet, bolts and nuts etc. and no separate payment being made for these items, as per direction of Engineer in Charge. The rates are considered for a height of erection 8m. / 2nd floor level from the ground. Add 1.5% extra over the rate for each additional floor or 4m. beyond initial 8m. or part thereof.) i) For structural members of specified sections weighing less than 22.5 Kg./m				
		0.370	mt	60230	Rs.22,285.10
				<b>Total =</b>	<b>Rs.61,844.06</b>

Add CGST @ 6% Rs. 3,710.64  
Add CGST @ 6% Rs. 3,710.64  
**Total = Rs.69,265.35**

Add LCESS @ 1% Rs. 692.65  
**Total = Rs. 60,958.00**

Add CONTEGENCY @ 1% Rs. 699.58  
**Total = Rs.70,657.58**

Say Rs.70,658.00

*Almed* 10.9.21  
**COUNTERSIGNED**

**Principal**  
Dewanhat Mahavidyalaya  
Dewanhat, Cooch Behar Pin-730134

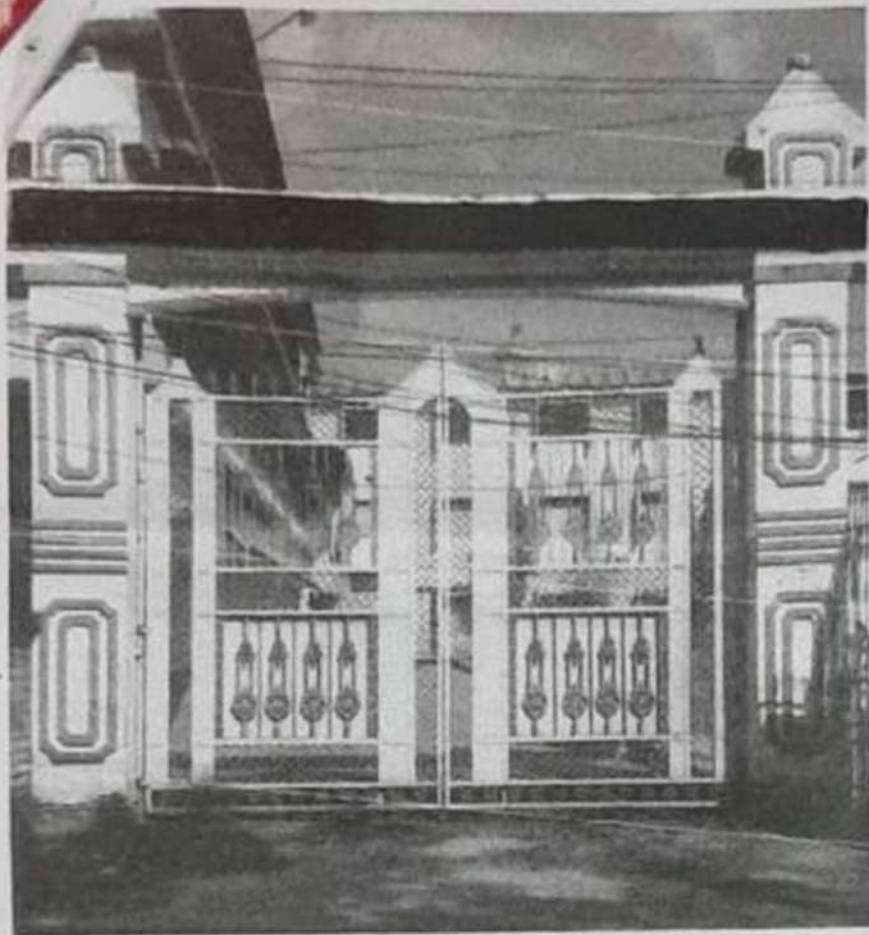
**ESTIMATED BY**

*Siben Das*  
09.09.2021.

**Siben Das**  
B. Tech  
Civil Engineer

*Siben Das*  
21/9/21

WBUT Regn NO-  
111700110106 of 2011-12.



*dated 21.9.21*

Principal  
Devaahat Mahsevidyalaya  
Devaahat, Coimbatore, Pin-577112